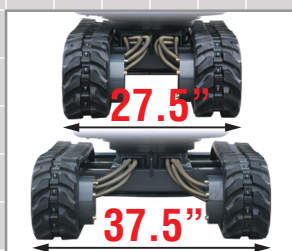


Bucket cylinder hose is placed inside of arm.
Improves forward visibility and helps prevent damage to the hose.



Auxiliary Attachment Hook Up Standard

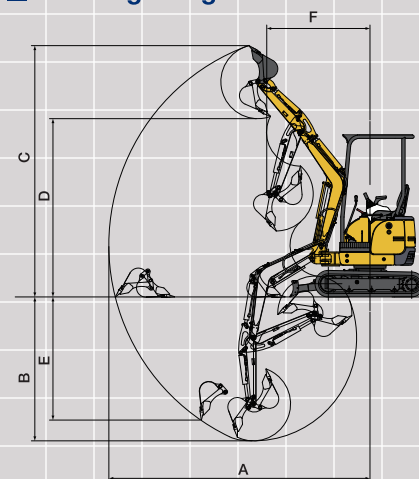
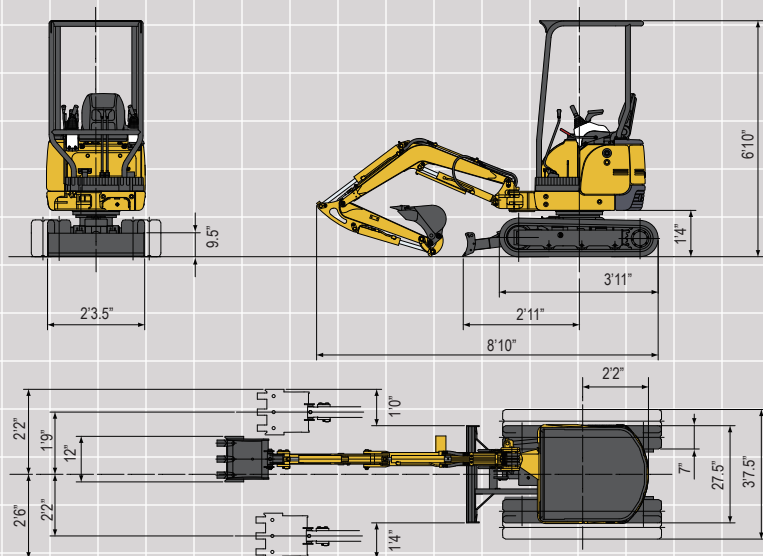


Expandable Undercarriage

- *Lithium Ion Battery Pack*
- *8 hour run time on full charge*
- *No battery memory - can be charged at anytime*
- *Throttle control for easy operation*
- *Backfill blade with retractable blade extensions*
- *Charger comes standard*
- *Fast 3 hour charging system available*



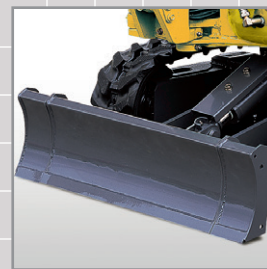
■ **Working Range**



A Max. digging radius	99"
B Max. digging depth	52"
C Max. digging height	90"
D Max. dumping height	66"
E Max. vertical digging depth	3'10"
F Min. front turning radius	40"
At right boom swing	3'1"

Expandable Undercarriage
27.5"-37.5" Variable Width

Model	9VXB
• Performance	
Bucket capacity	.8 cu. ft.
Bucket width	12"
Operating weight	2060 lbs
Transportation weight	1885 lbs
Swing speed	8.7 rpm
Travel speed (low/high)	1.1/2.2 mph
Gradeability	30°
Ground pressure	3.8 psi
Max.bucket digging force	2360 lbs
• Boom swing system	
Type	Boom offset with hydraulic cylinder
Swing angle (L/R)	50° / 90°
• Hydraulic system	
Pressure	2350 psi
Pump type	Gear
Auxiliary Flow	5.85 gal
• Dozer blade	
Size	27.5" x 11"
Lift above ground / Drop below ground	9" / 8"



Retractable Blade Extensions

KATO CES

• Bucket
8"
12"
16"
18"

COMPACT EXCAVATOR SALES, LLC
400 PRODUCTION COURT
ELIZABETHTOWN, KENTUCKY 42701
P. 800.538.1447 • F. 270.737.0419
WWW.KATOCES.COM